



Antelope  
Valley  
RCD

# FACT SHEET

## About Us

### Antelope Valley Resource Conservation District

#### **Our Motto:** *Reach, Teach, and Serve*

**Our Mission:** The Antelope Valley Resource Conservation District assists the communities we serve to manage and enhance their natural resources through education, leadership, and expertise in science-based conservation.

**Who We Are:** The Antelope Valley RCD is a special district of the State of California and is largely dependent upon grants and contracts for its programs. The District is allocated a limited property tax increment share from Los Angeles, Kern, and Ventura counties for fixed costs.



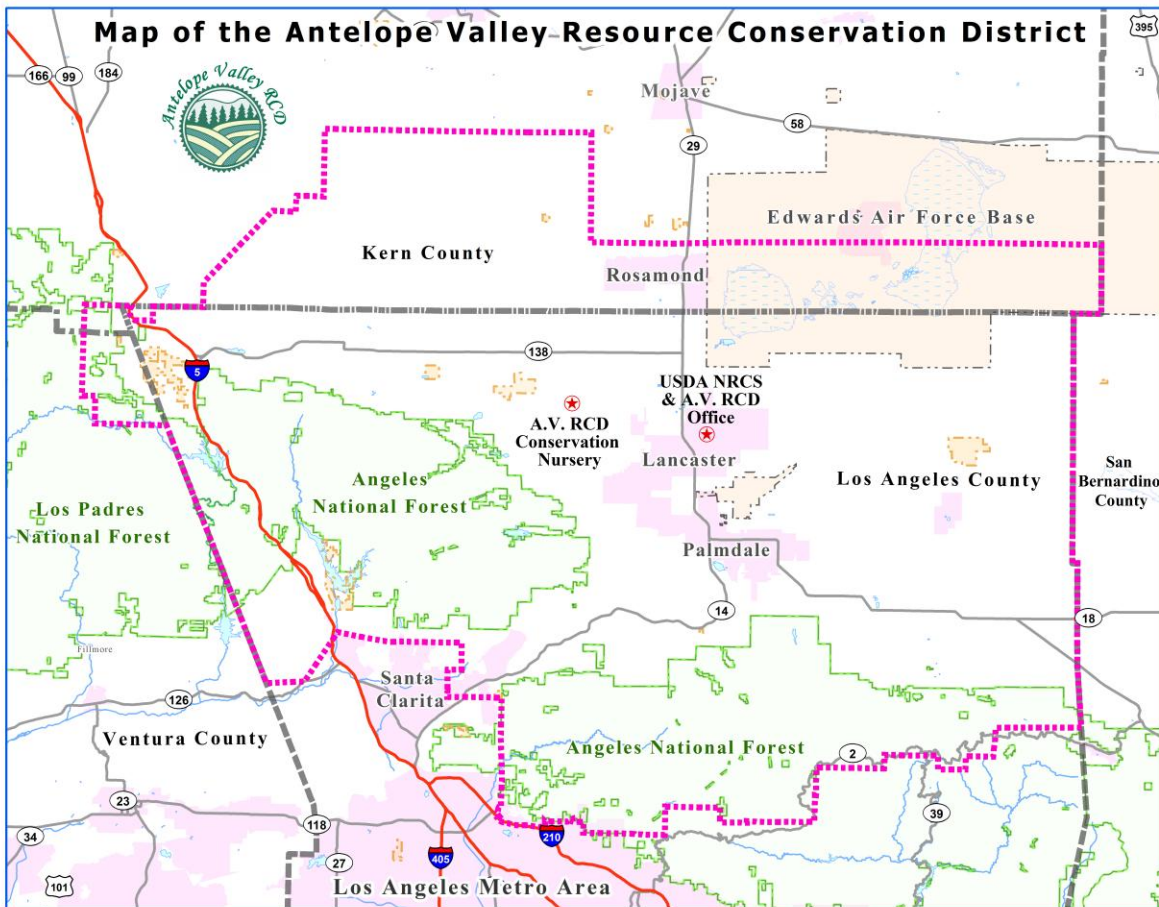
**Who We Serve:** Private landowners, farmers, ranchers, public and private entities, and future generations.

**What We Do:** We find available technical, financial, managerial, and educational resources, whatever their source, and focus or coordinate them to meet the needs of the local community in conserving soil, water, and related natural resources.



**Our Partners:** Our office is located in the **USDA** Lancaster Service Center with our federal partners, the **Natural Resources Conservation Service** (NRCS) and Farm Service Agency (FSA). We also work closely with our neighboring RCDs and are active in the California Association of RCDs and the Mojave Desert-Mountain Resource Conservation and Development Council.

**Our History:** Resource Conservation Districts were formed during the 1930s when the problem of soil erosion became severe throughout the United States. The Federal Government saw that existing conservation programs were inadequate to combat the worsening situation. Congress passed the Standard State Conservation District Law in 1937 to generate local participation and leadership to effectively combat the degradation of the country's land resources. The present **Antelope Valley Resource Conservation District** was created by the Los Angeles County Board of Supervisors on August 28, 1966, when three smaller World War II-era districts were consolidated. The AVRCD was further expanded in 1985 with the addition of the upper Santa Clara and Tujunga watersheds (formerly overseen by a San Fernando Valley-area RCD).



**Where We Are:** The District encompasses approximately **1.65 million acres** bounded on the east by the San Bernardino County Line; the north by southeast Kern County; the west by the Ventura County line; and the south by the urban Los Angeles/Santa Clarita area and Angeles Crest Highway.

**Board of Directors:** The District is governed by a five-member volunteer Board of Directors, comprised of local landowners and business people. In lieu of election, AVRCD Directors are appointed by the Los Angeles County Board of Supervisors.

- **Kathleen Burr**, President  
(resident of Acton; former Los Angeles County Farm Bureau Executive Director)
- **Richard Campbell**, Vice President  
(resident of Palmdale; retired USDA NRCS District Conservationist)
- **Vickie Nelson**, Treasurer  
(resident of Lancaster; on the Antelope Acres Town Council)
- **Ruth Michael**, Secretary  
(resident of Lancaster; former NRCS District Conservationist)
- **Keith Deagon**, Director  
(resident of Acton; Forester with the Los Angeles County Forestry)

**Contact Information:**

**Antelope Valley Resource Conservation District**

44811 N. Date Ave., Suite G, Lancaster, CA 93534

(661) 945-2604 Ext. 107, [avrkd@carcd.org](mailto:avrkd@carcd.org)

[www.avrkd.org](http://www.avrkd.org).